



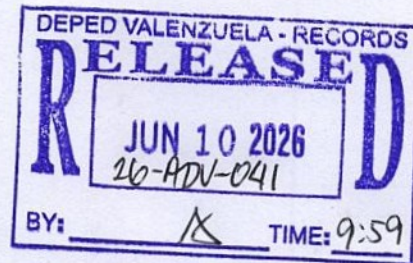
DepEd ICT Unit

Web Posted by: on  
Control no.: 21Pub572

Republic of the Philippines  
**Department of Education**

NATIONAL CAPITAL REGION

**SCHOOLS DIVISION OFFICE VALENZUELA CITY**



Division Advisory No. 043, s. 2026  
June 2, 2026

**WANDERING MINDS: INTERACTIVE SCIENCE  
MOBILE EXHIBIT**

Attached is the letter from the Wandering Minds company dated May 11, 2026, inviting and offering the schools to participate in the various interactive science activities specifically original and classic plays for public elementary and secondary school's learners.

Schools are encouraged to attend provided the strict compliance with DepEd Order No. 9, s. 2005"; "DepEd Order No. 19, s. 2008, "No Collection Policy in Public Schools" "No Disruption of Classes Policy", and DepEd Order No. 9, S. 2026 "Guidelines on the implementation of the Three Term School Calendar in Basic Education".

For information and guidance.

**NOEL D. BAGANO**  
Schools Division Superintendent

SGOD/ECP  
June 2, 2026

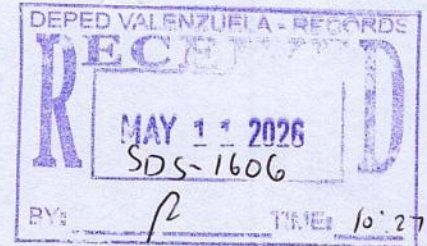


Address: Pio Valenzuela St., Marulas, Valenzuela City  
Telephone Nos.: (02) 8293-4507, 8277-4648, 8291-0873, 8277-3439  
Email Address: [sdovalenzuela@deped.gov.ph](mailto:sdovalenzuela@deped.gov.ph)  
Official Website: <https://www.sdovalenzuelacity.deped.gov.ph>





Noel D. Bagano, CESO VI  
School Division Superintendent  
Schools Division Office  
Valenzuela City



Warm greetings.

We are pleased to present Wandering Minds Science Mobile Exhibit, an innovative and fully portable science learning experience designed to serve learners from Preschool to Senior High School. Our program delivers engaging, hands-on, and curriculum-aligned science activities that directly support the DepEd K–12 curriculum competencies across all grade levels.

### Program Overview

Wandering Minds transforms your school into an interactive science discovery hub through a series of guided exhibit stations. Each activity is designed to be age-appropriate, inclusive, and aligned with learners' developmental stages—ensuring meaningful participation from young learners to advanced students.

### Grade-Level Alignment & Competencies

#### 1. Preschool (Early Childhood Education)

Focus: Exploration, curiosity, and sensory learning

Competencies:

- Observe and describe simple objects and natural phenomena
- Develop basic motor and cognitive skills through play-based exploration
- Recognize patterns, shapes, colors, and basic cause-and-effect relationships

#### 2. Elementary (Grades 1–6)

Focus: Foundational scientific understanding and inquiry

Competencies:

- Demonstrate understanding of basic concepts in Life, Physical, and Earth Science
- Classify, compare, and describe materials and living things
- Perform simple investigations and record observations
- Apply science concepts to everyday situations

#### 3. Junior High School (Grades 7–10)

Focus: Concept development and scientific reasoning

Competencies:

- Explain scientific concepts such as force, motion, energy, ecosystems, and matter
- Conduct guided experiments using the scientific method
- Analyze data and interpret results
- Relate science concepts to real-world applications and environmental awareness



#### 4. Senior High School (Grades 11–12)

Focus: Application, specialization, and critical thinking Competencies:

- Apply advanced scientific principles in Biology, Chemistry, and Physics
- Design and conduct experiments and investigations
- Evaluate scientific evidence and propose solutions to real-world problems
- Integrate STEM concepts in practical and career-oriented contexts

#### Key Exhibit Areas

- **Life Science Zone** (Human body systems, ecosystems, biodiversity)
- **Physical Science Zone** (Force, motion, energy, electricity)
- **Earth & Space Zone** (Weather systems, geology, astronomy)
- **Chemistry Corner** (States of matter, reactions, properties of materials)
- **STEM Innovation Area** (Engineering challenges, problem-solving activities)

#### Program Features

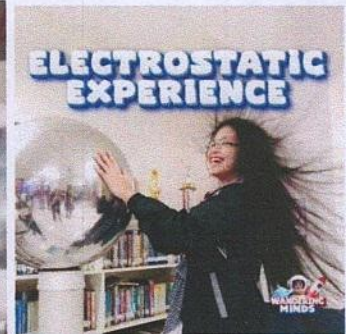
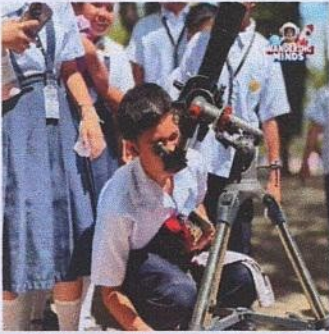
- Interactive, hands-on exhibit stations
  - Facilitated by trained science presenters
  - Safe, structured, and engaging learning environment
  - Customizable setup based on school space and schedule
- Flexible packages (per student, per day, or whole-school engagement)

#### Benefits to Your Institution

- Strengthens delivery of K–12 competencies through experiential learning
- Increases student engagement, curiosity, and retention
- Supports teachers with enriched instructional strategies
- Encourages STEM interest and career awareness
- Provides a unique, memorable educational experience for all learners

#### Programs Offered

- **Package 1** – The Ultimate 3D Experience that comes with 3 stations: 3D Viewing (same technology with SM IMAX), Manipulative Exhibit, and Wanderlab Science Laboratory Show
- **Package 2** – The Mobile Planetarium Experience that comes with 3 stations: Space Dome, Space Exhibit, and Environmental Awareness Program with AI and Robotics  
Bonus: Solar Viewing (if the sun is visible); Star Gazing (by request and if the weather permits)
- **Package 3** – Jurassic on Wheels and the World of AI that comes with 3 stations: Jurassic Explorations, Timeless Treasures and Inventions, and 3D Viewing (same technology with SM IMAX)  
Featuring: Wamisaur – Dino 3D Encounter
- **Package 4** – The Aquadome Experience (the 1<sup>st</sup> Mobile Aquadome in the Philippines) that comes with 3 stations: Aquadome Experience, Awareness and Discovery station, and the Deep-Sea station



Wandering Minds is committed to making science accessible, exciting, and relevant for every student. We would be honored to collaborate with your institution in bringing this enriching educational experience to your learners.

We would appreciate the opportunity to schedule a brief presentation or meeting to discuss how we can tailor the exhibit to your school's needs.

Thank you very much for your time and consideration.

Sincerely,

Joy Torres  
Marketing Executive  
Wandering Minds Science Mobile Exhibit  
0948 291 9122  
joy.wanderingminds@gmail.com

Advisory No. **082**, s. 2026

April 10, 2026

In compliance with DepEd Order (DO) No. 8, s. 2013  
This advisory is issued not for endorsement per DO 28, s. 2001,  
but only for the information of DepEd officials,  
personnel/staff, as well as the concerned public.  
(Visit [www.deped.gov.ph](http://www.deped.gov.ph))

**WANDERING MINDS INTERACTIVE SCIENCE MOBILE EXHIBITS  
FOR THE SCHOOL YEAR 2026–2027**

Wandering Minds Inc., committed to delivering innovative, curriculum-aligned learning experiences that spark curiosity, strengthen scientific understanding, and prepare learners for an increasingly technology-driven world, will host its Science Mobile Exhibits in schools nationwide for School Year 2026-2027.

The enhanced program integrates immersive environments, robotics, artificial intelligence (AI), and environmental education, creating a more holistic and future-ready science, technology, engineering, and mathematics experience for Filipino learners. It features the following learning experiences:

- 3D Science Experience with Wanderlab Science Show;
- Space Dome Mobile Planetarium Experience (Enhanced);
- Jurassic On Wheels and the World of AI (Expanded with Robotics and AI Applications); and
- Aquadome: An Immersive Journey into Aquatic Life and Environmental Stewardship.

Preschool to senior high school learners, with adaptable modules for college-level learners, are invited to participate in this event, empowering them to become active contributors in shaping the future.

Interested participants may visit the Wandering Minds Inc. website for additional details about the event.

Participation of learners and teachers from public and private schools shall be purely voluntary and will not hamper instructional time in compliance with the provisions of DepEd Order (DO) No. 012, s. 2025, titled Multi-Year Implementing Guidelines on the School Calendar and Activities and DO 9, s. 2005 titled Instituting Measures to Increase Engaged Time-on-Task and Ensuring Compliance Therewith and the policy on off-campus activities stated in DO 66, s. 2017.

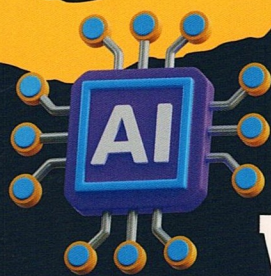
This is also subject to the no-collection policy as stated in Section 3 of Republic Act No. 5546 also known as An Act Prohibiting the Sale of Tickets and/or the Collection of Contributions for Whatever Project or Purpose from Students and Teachers of Public and Private Schools, Colleges and Universities (Ganzon Law), issued in DO 19, s. 2008, and reiterated in DepEd Memorandum No. 041, s. 2024.

For more information, please contact:

Ms. Kristel Dianne Tabangay-Barnhill or Ms. April Anne Lerit  
Wandering Minds Inc.  
Mobile Numbers: 0935-471-8790 or 0919-098-3298  
Email Address: [info@wanderingminds.ph](mailto:info@wanderingminds.ph)  
Facebook: [facebook.com/wanderingmindsph](https://www.facebook.com/wanderingmindsph)  
Website: [www.wanderingminds.ph](http://www.wanderingminds.ph)



by CLista  
Snapshots



# WANDERING MINDS

## INTERACTIVE *Science Mobile Exhibits*

Educational Programs | Workshops | Science Fairs  
| Birthdays Special Occasions | Corporate Events | Seasonal Events |



THE ULTIMATE 3D  
SCIENCE EXPERIENCE



SPACE DOME MOBILE  
PLANETARIUM



JURASSIC ON WHEELS  
AND THE WORLD OF AI



AQUA DOME EXPERIENCE  
COMING SOON 2025

**BOOK NOW!**

+63935-471-8790 (GLOBE)  
+63919-098-3298 (SMART)



INFO@WANDERINGMINDS.PH



WWW.WANDERINGMINDS.PH



TARLAC, PHILIPPINES





# Why Choose us?

SEC REGISTERED



PHILGEPS PLATINUM REGISTERED



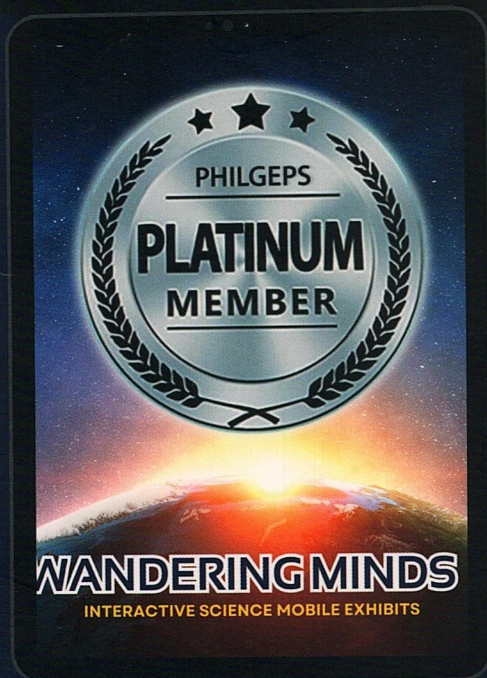
SAFE AND CONVENIENT



DEPED COMPLIANT



SUPPLEMENTAL EDUCATION



## Contact Us Today!

INFO@WANDERINGMINDS.PH

+63935-471-8790 (GLOBE)  
+63919-098-3298 (SMART)